



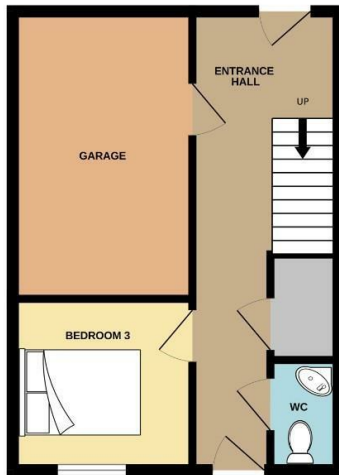
19 Anley Way, Coventry, CV6 3LN

*** AVAILABLE JUNE *** Situated in the heart of the sought after suburb of Daimler Green, this three bed, three storey town house is offered on a furnished basis and is available for immediate occupation. With fantastic links into Coventry City Centre and the wider road networks this lovely offering is sure to suit the busy professional, the accommodation in brief comprises entrance hall, internal garage, bedroom three and WC to the ground floor, a modern kitchen, lounge and family bathroom occupy the first floor whilst the top floor is home to the master suite with ensuite and bedroom number two. Outside there is off-road parking and an enclosed rear garden.

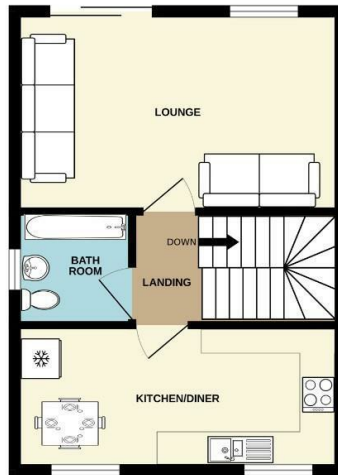
- Three storey furnished town house
- Sought after location
- Three double bedrooms
- Modern kitchen/diner
- Three bathrooms
- Internal garage & Off Road Parking
- Available JUNE!!!
- EPC C & Council tax band C

£1,100 PCM

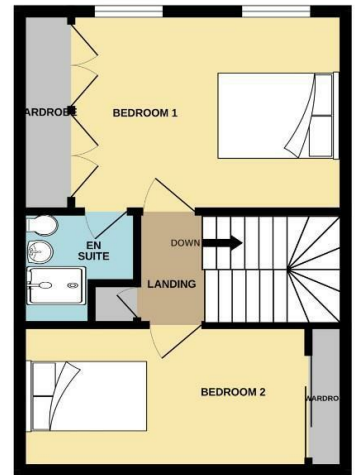
GROUND FLOOR



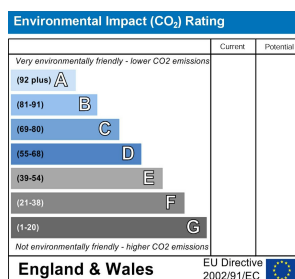
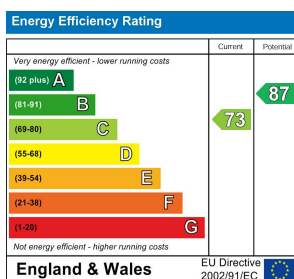
1ST FLOOR



2ND FLOOR



This floor plan is not to scale and is for guidance purposes only
Made with Metropix ©2024



39 Newdegate Street, Nuneaton, Warwickshire, CV11 4ER
Tel: 02476 374949 Email: nuneatonlettings@sheldonbosleyknight.co.uk

